



2nd Open Call

Guideline for EEN Sustainability Advisors



This project has received funding from the European Union's Single Market Programme (SMP) under grant agreement No. 101143477, and is being executed in direct cooperation with the Enterprise Europe Network

Copyright message

© EENergy Consortium, 2023-2025. This deliverable contains original unpublished work except where clearly indicated otherwise. Acknowledgement of previously published material and of the work of others has been made through appropriate citation, quotation, or both. Reproduction is authorized provided the source is acknowledged.

Table of Contents

Copyright message	1
Table of Contents	1
List of Figures.....	1
Acronyms, Abbreviations & Terms.....	2
1 Introduction	3
2 Open Call Description	3
2.1 Eligible Activities	3
2.1.1 Financial Support to Selected Eligible SMEs.....	3
2.1.2 Advisory Support to All Eligible SMEs.....	0
2.2 Sustainability Advisors / Client Interaction.....	0
2.3 Eligibility Criteria	4
2.4 Energy Intensive Industries.....	6
2.5 Support & Help	7
3 Selection Process	7
4 Administrative & Financial Details.....	7
4.1 Conflict of Interest	7
4.2 Double Funding.....	8
4.3 Non-Eligible Costs	9
4.4 Other Legal and Liability Information	9
5 Checklist	10

List of Figures

Figure 1: Expected timings for key milestones in the EENergy 2 nd Open Call.....	3
Figure 2: Logic flow chart to evaluate EENergy implementation plan eligibility	0
Figure 2: Overview of the overall process for the EENergy open call	1

Acronyms, Abbreviations & Terms

Acronym	Definition
EE	Energy Efficiency
EEN	Enterprise Europe Network
EU	European Union
SME	Small and Medium Enterprise
SMP	Single Market Programme
Client / EEN client	Any SME engaging with EEN and receiving advanced, tailored support by EEN advisors

1 Introduction

This document provides guidance and information for **EEN Sustainability Advisors** who are supporting their clients with an application to the 2nd open call of the EENergy project, including information regarding the EENergy advisory process workflow, the responsibilities of the advisor, and the tools and support available to the sustainability advisors. It is strongly recommended that all sustainability advisors applicants read this document in its entirety in order to ensure they provide the most suitable support to their clients.

2 Open Call Description



Figure 1: Expected timings for key milestones in the EENergy 2nd Open Call

The open call described in this document is open from 2nd December 2024 and will close on 28th February 2025 at 17:00 CET. The planned schedule of the call is shown in Figure 1. The sustainability advisor must complete all their advisory tasks (SME onboarding, assessment, EENergy Implementation Plan creation, and application confirmation) for the SME in sufficient time to allow the SME to complete their application before the call deadline. These tasks are described in more detail in section 2.2.

2.1 Eligible Activities

2.1.1 Financial Support to Selected Eligible SMEs

Financial support of up to **€10,000** will be allocated to the funded beneficiaries. These funds provided by EENergy must be used to carry out their **EENergy implementation plan** which results in improved energy efficiency for the beneficiary SME. The contractual aim of the activities is to achieve a 5% reduction in energy consumption within the relevant scope of the action as described in section 2.1.1.2. The EENergy implementation plan differs slightly from the EEN action plan to be generated for all clients, since the implementation plan should only cover the activities to be carried out using the grant funding received from the EENergy project, whereas an action plan should address the client's wider, mid- and long-term energy efficiency needs. In this sense, for the majority of clients, it is expected that the implementation plan will be only a subset of their EEN action plan.

2.1.1.1 Implementation Plan Content

Investment, consultancy, and training actions are all eligible for funding in the EENergy 2nd Open Call.

The **investment** definition covers the implementation, acquisition, purchase, and/or installation of new software, hardware, equipment, or other technologies. Some examples include:

- Contributions to the purchase and installation of renewable energy systems such as solar panels, wind turbines, invertors, storage systems or any other relevant equipment.
- The implementation of energy optimisation / management software on a production line.
- The replacement of an old boiler with a modern one using more efficient technologies.
- The replacement of outdated power supply units with modern and effective ones.

The **consultancy** and **training** categories cover advisory & consultancy services, energy audits, training & upskilling activities, and other comparable activities aimed at identifying energy efficiency improvements or improving the general energy efficiency characteristics. For example:

- Performing a detailed needs analysis for the SME beneficiary and defining a detailed investment roadmap for energy efficiency improvement which leads to a 5% energy reduction.
- Conducting an energy audit with the goal of identifying and implementing an action leading to a 5% reduction in a relevant scope.
- Engaging an expert to evaluate feasibility of equipment installation or to perform regulatory checks, in combination with the implementation of the investment.
- Training for employees on best practices, awareness, regulatory aspects, and behavioural change related to energy efficiency.

2.1.1.2 Implementation plan scope

The realization of the implementation plan and the achievement of the 5% energy reduction is to be evaluated in the context of a **relevant scope** corresponding to the boundaries of the action. This scope can range from something as narrow as a single piece of equipment, to as wide as the entire firm. By definition, certain types of investments must be associated with certain scopes:

- Energy reductions achieved through investments in machinery replacement or upgrades may be measured on a smaller scope, such as a piece of equipment, or on a production line, since the reduction achieved through such an investment can be directly measured within such a scope.
- Investments in conditioning systems or building upgrades can only be measured within the scope of a building or the entire firm, since by definition, such investments impact these scopes correspondingly.

Combinations of activity types are possible, however in these cases they must together form a **coherent** implementation plan where all activities contribute towards the achievement of the 5% energy reduction within the scope of the implementation plan.

- For an investment in a new piece of equipment, combined with a training program for employees for operation of this investment, **the 5% reduction can be reported on at the equipment level**, since the training is directly contributing to the achievement of the energy reduction by enabling employees to operate the new equipment.
- For an investment in a new piece of equipment, combined with a training program for general behavioural change within the company, **the 5% reduction can only be reported on a building or company level**, since the training part of the implementation plan is not contributing to the energy reduction on the equipment level.

This flexibility is provided in order to allow SMEs of different sizes, geographical locations, and industries, to appropriately define a relevant scope within which a 5% reduction is achievable with the available funds. It should however be noted that the impact evaluation will measure impacts at the

company level. Thus, it is strongly encouraged to submit coherent and realistic implementation plans that would produce detectable impacts at this level.

2.1.1.3 Multiple activities

Implementation plans with multiple cost items are eligible, but the cost items must be coherent with each other if a unit scope smaller than the company is selected. For example, upgrading two pieces of equipment in a single production line is eligible, as long as the combined energy reduction achieved represents at least 5% across the production line.

Example: Client A has a production line which an annual consumption of 20.000 kWh / year. Client A plans to use the EENergy funds to replace a compressor on the production line, which consumes 4.000 kWh / year with a more efficient version, consuming 3.000 kWh / year. Additionally, they replace a bandsaw, which consumes 1.000 kWh / year, with a more efficient version consuming 800 kWh / year. As a result of these investments, the annual consumption of the production line decreases from 20.000 kWh / year to 18.800 kWh / year, a reduction of 6% -> **This plan is eligible since the overall production line consumption decreases by at least 5%.**

Example: Client B has a production line which an annual consumption of 20.000 kWh / year. Client B plans to use the EENergy funds to replace a compressor on the production line, which consumes 4.000 kWh / year with a more efficient version, consuming 3.000 kWh / year. Additionally, they replace a bandsaw, which consumes 1.000 kWh / year, with a more efficient version consuming 970 kWh / year. As a result of these investments, the annual consumption of the production line decreases from 20.000 kWh / year to 18.970 kWh / year, a reduction of 5.15% -> **This plan is eligible. Even though the bandsaw energy reduction is less than 5%, the overall production line consumption decreases by at least 5% making the plan eligible.**

Example: Client C has a production line which an annual consumption of 30.000 kWh / year. Client C plans to use the EENergy funds to replace a compressor on the production line, which consumes 4.000 kWh / year with a more efficient version, consuming 3.000 kWh / year. Additionally, they replace a bandsaw, which consumes 1.000 kWh / year, with a more efficient version consuming 970 kWh / year. As a result of these investments, the annual consumption of the production line decreases from 30.000 kWh / year to 28.970 kWh / year, a reduction of 3,4% -> **This plan is ineligible since the overall production line consumption decreases by less than 5%.**

On the other hand, two or more separate activities (for example, investing in lighting and in a new boiler), are only eligible as long as the scope considered encapsulates both activities and the combined reduction resulting from these investments represents a 5% reduction on this combined level (for example, on a building or company level)

Example: Client D has an annual consumption of their company of 20.000 kWh / year. Client A plans to use the EENergy funds to replace a boiler, which consumes 4.000 kWh / year with a more efficient version, consuming 3.000 kWh / year. Additionally, they replace lighting, which consumes 1.000 kWh / year, with more efficient lighting consuming 200 kWh / year. As a result of these investments, the annual consumption of the company decreases from 20.000 kWh / year to 18.200 kWh / year, a reduction of 9% -> **This plan is eligible since the overall company consumption decreases by at least 5%.**

Example: Client E has an annual consumption of their company of 30.000 kWh / year. Client E plans to use the EENergy funds to replace a boiler, which consumes 4.000 kWh / year with a more efficient version, consuming 3.000 kWh / year. Additionally, they replace lighting, which consumes 1.000 kWh / year, with more efficient lighting consuming 800 kWh / year. As a result of these investments, the

*annual consumption of the production line decreases from 30.000 kWh / year to 28.800 kWh / year, a reduction of 4% -> **This plan is ineligible since the overall company consumption, which is the only scope covering both activities, decreases by less than 5%.***

Total implementation plan budgets larger than €10.000 are possible, but the overall grant funding to be provided will not exceed **€10,000 per SME**. Hence, an SME may either apply for financing 100% of an activity with a budget up to €10.000, or it may propose a larger activity with a larger budget, to be co-financed from alternative private sources. **However, it must be noted that if selected, the submitted implementation plan will form part of the grant agreement with the EENergy project and hence constitute a contractual commitment on the side of the beneficiary.** Therefore, applicants and advisors are encouraged to ensure that the company has the necessary resources to fully carry out the EENergy implementation plan even if the total costs exceed the €10.000, since funding can only be approved once the implementation plan is completed.

2.1.1.4 Implementation plan characteristics

In order to be eligible, an EENergy implementation plan must fit the following characteristics:

- **Coherence:** The presented activities must form a coherent implementation plan which all contribute to the improvement of energy efficiency.
- **Quality:** The plan must be sufficiently well described and formulated so that it is clear what activities will be performed since in the case of selection this forms the basis of the contractual agreement between the beneficiary and the EENergy consortium.
- **5% rationale:** The plan must credibly demonstrate the foreseen energy reduction and explain the rationale for this calculation. If the plan involves investments, this rationale must be supported by quantitative references to actual values/data related to the investments. For non-investment actions, the plan must clearly explain how a 5% rationale will be targeted through the design of the actions.
- **Timeframe:** The plan must be realistically implementable within the project timeframe. All implementation costs must be incurred by the end of the reporting period i.e., 31st January 2026 in order to be eligible for reimbursement. The realisation of the 5% energy reduction must also be credibly expected within this timeframe.

To support clients and advisors to assess the suitability of their implementation plans, a logic flow-chart is presented in Figure 2 below. Additionally, a set of template implementation plan examples has been prepared to demonstrate the content of a model eligible EENergy implementation plan. The examples can be found in Annex A of this document.

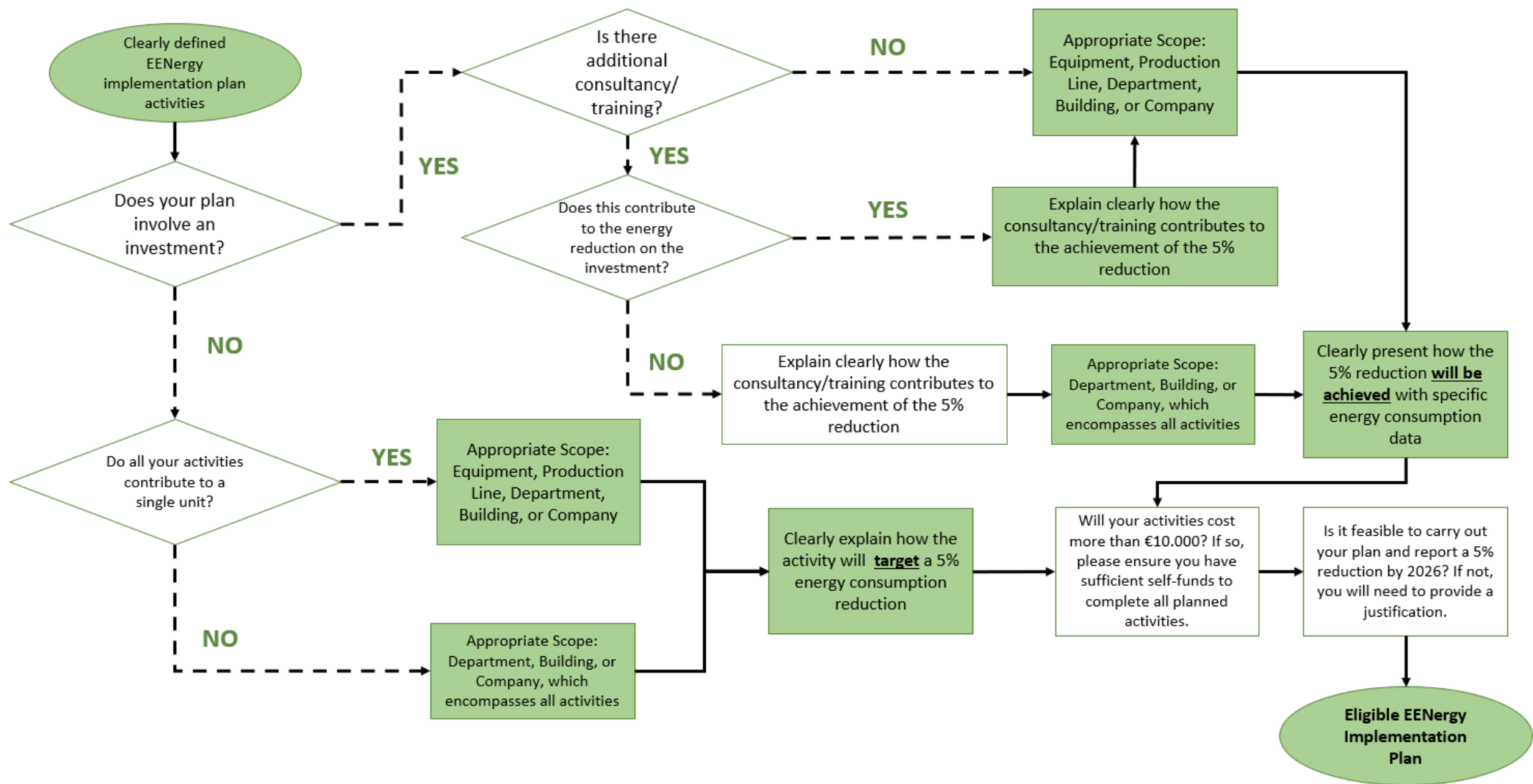


Figure 2: Logic flow chart to evaluate EENergy implementation plan eligibility

2.1.2 Advisory Support to All Eligible SMEs

Independent of the financial support, all eligible applicants shall benefit from all EEN advisory services which support increased energy efficiency activity implementation. An innovative product will be offered to all eligible applicants/, including both funded and regular beneficiaries: the so-called “**benchmark reports**”. The application process for the program includes a detailed feedback mechanism that is activated following the submission of the application. Eligible applicants will receive a comprehensive report based on the information provided during the application stage. Moreover, in addition to this initial report, the firm will receive three additional follow up benchmark reports. To access these reports, the firm needs to provide further information with a focus on its energy consumption. These reports offer a comparative statistical analysis of the firm's energy efficiency performance against others in the same size category, region, and industry. The analysis is tailored to provide insights into the firm's position in relation to its peers, allowing to identify areas of strength and opportunities for improvement with the EEN advisors.

Sustainability advisors are requested to support the data collection and follow-up with their clients across three data collection periods, which will be a pre-requisite to receiving the benchmark reports. These reports will serve as an indication of improved energy efficiency performance of clients and hence may be used to demonstrate impact arising from the advisory services provided, **potentially qualifying these services to be registered as achievements.**

2.2 Sustainability Advisors / Client Interaction

The sustainability advisors play a critical role in the preparation of an eligible application, and clients will be partially dependent on their advisors to perform several key steps in the context of the EENergy application process (Figure 2).

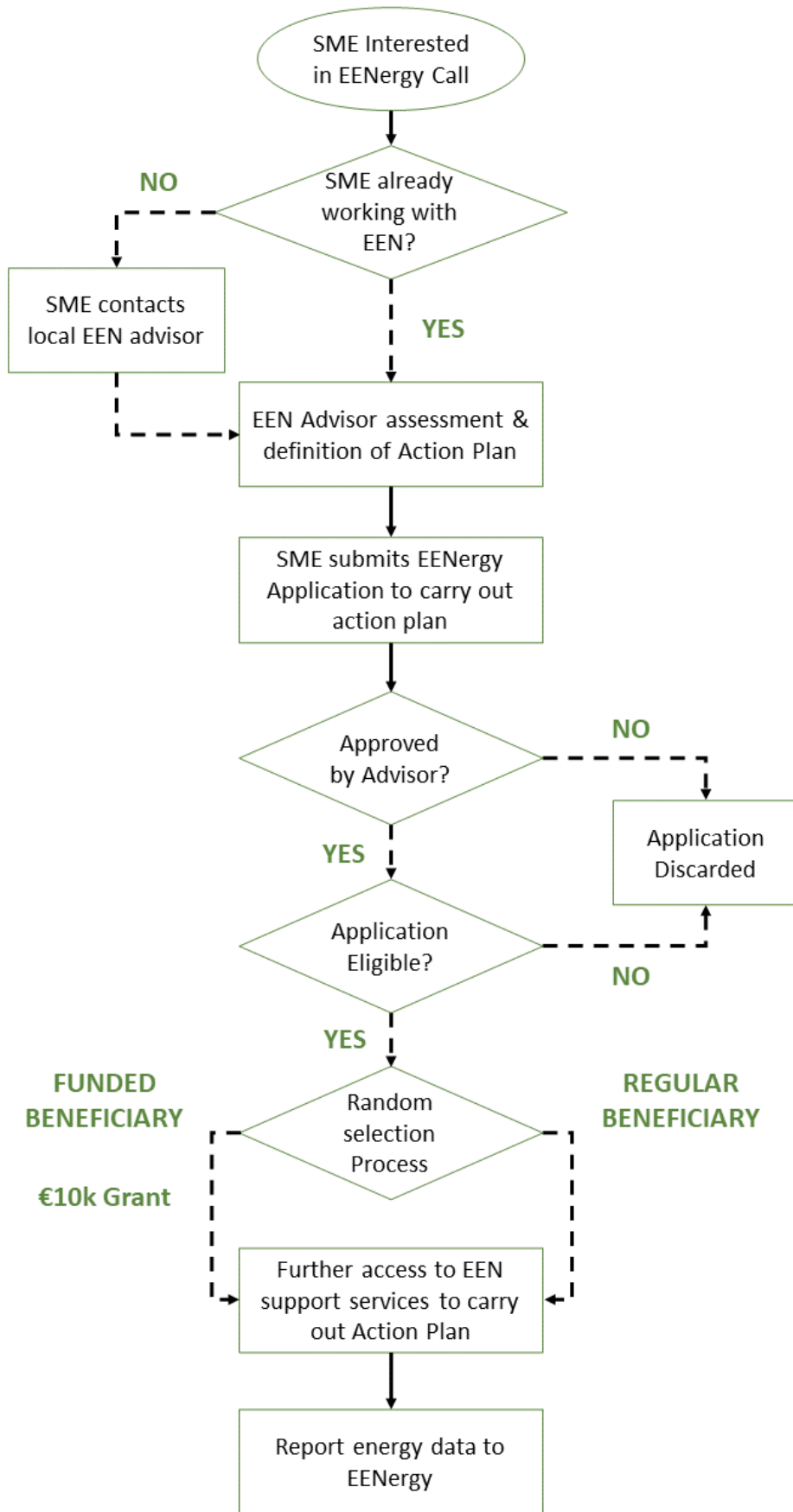


Figure 3: Overview of the overall process for the EENergy open call

Step 1: Acquisition of EENergy clients. The EENergy open call is open to any SME located in countries participating in the EU's Single Market Programme (SMP), which has been incorporated and operational since before 01.01.2024¹. Both existing EEN clients, as well as SMEs not yet engaged with the EEN, are eligible to participate. Client mobilisation by EEN Sustainability Advisors will be key in order to reach the targeted minimum number of 1800 eligible applicants over both calls, and advisors are encouraged to mobilise both their existing EEN clients, as well as reaching new SMEs in their region. In particular, SMEs active in Energy Intensive Industries should be targeted. An updated definition of these industries is provided in section 2.4.

As with any other suitable financing opportunity, sustainability advisors should introduce EENergy to potential clients, explain to the clients what the call requires and how the project will work, and, if the client is interested, move forward with the next steps.

Several new clients are expected to be recruited by EEN through outreach efforts of the EENergy consortium and the wider EEN community. In these instances, SMEs will approach their local EEN consortia through the publicly listed local contact points.² SMEs from Liechtenstein and Moldova, as participants of the SMP, are eligible for the EENergy open call, but have no EEN organisation in their region. Any such interested SMEs will be encouraged to contact their nearest EEN organisation to access support services. **In these instances, EEN advisors are expected to support these clients for the purposes of EENergy and this support will be eligible for advisory achievements as normal.**

Step 2: Company assessment and drafting of an EENergy implementation plan. The main role of the EEN Sustainability advisors is to support the applying SME to define and initiate an **EENergy implementation plan** to enhance its energy efficiency with the goal of an improvement of at least 5%. The advisors will support clients in their energy transition by, performing a needs analysis, identifying key targets for increased energy efficiency, and providing advice on suitable energy efficiency measures to be deployed. Together with the client, the EEN sustainability advisor will discuss the economic and strategic context for the action. The support service consists nominally of three steps:

1. The EEN sustainability advisor shall arrange a kick-off meeting with the interested SME, either on-site or remotely, allowing the advisor to perform an initial needs assessment, as well as to collect key data required for performing the complete general client intake process including the energy efficiency assessment and the design of the implementation plan accordingly. To support this diagnosis, a dedicated assessment tool has been prepared for use by the sustainability advisors. This tool is available for download³, but its use is not mandatory.
2. The EEN sustainability advisor will analyse the data collected along with the other information learned and gathered during the initial meeting, in order to perform the assessment of the company's energy efficiency needs.
3. The EEN sustainability advisor will report the outcomes of their analysis to the SME and discuss the learnings and conclusions. These results will be used to draft the EENergy implementation plan for the SME which will provide the content for the application. Specific guidelines and examples for the content of the implementation plan will be established within the EENergy toolset for sustainability advisors, in order to ensure a plan which covers qualified

¹ This restriction ensures that SMEs have a baseline energy consumption performance period of at least 1 calendar year, necessary to fulfil the approach of the open call.

² <https://een.ec.europa.eu/local-contact-points>

³ <https://www.een-ara.fr/form-download-assessment-tool-een-sustainable-advisors-within-eenergy-programme>

and reliable approaches. For example, the action plan may consist of solutions or technologies specified within the EEN catalogue of EE measures⁴.

This mandatory assessment and implementation plan formulation will be a **pre-requisite** for each application. Through the drafting of the implementation plan as an obligatory entry condition, every SME will benefit from an individual assessment, leading to further support measures for the applicant's benefit which can be derived and implemented. This individual implementation plan will cover business and innovation support and access to existing alternative funds beyond the EENergy open call. The content of the implementation plan will be the basis for the client's EENergy application.

Step 3: Confirmation and documentation of EENergy implementation plans. After the submission of the application, and in order for an SME's application to be formally checked for eligibility, the sustainability advisor must confirm they have supported the applying SME to develop an implementation plan. This is achieved through an automatic email-based notification system. The SME must provide the name and email of their sustainability advisor in the application form. **Advisors should ensure to use their professional work email address for this step, as part of the eligibility check will involve the proofing of valid EEN email addresses to ensure only genuine EEN advisors have supported client applications.**

After submission, the named sustainability advisor will receive an automated email to this address asking them to confirm whether (or not) that the SME in question has been supported in developing an implementation plan with the advisor. This serves as a check to ensure only those clients who have worked with their EEN advisor on an implementation plan are considered in the next steps of the process. The **sustainability advisor must approve the application** by clicking on the relevant link in the email. Only when this has been confirmed by the sustainability advisor, via the link shared in the automated email, will the application be officially submitted for eligibility approval. The SME's programme application will not be officially considered as submitted until this confirmation has been declared by the sustainability advisor. **It is therefore critical that all sustainability advisors are diligent in ensuring they approve their client's applications.** In addition, as with any other action plan, **the sustainability advisor must upload the implementation plan in EEN CONNECT** (although this step is not directly linked to the application processing by EENergy).

Step 4: Continued advisory services. Following the submission of the application, at least 229 applicants will be randomly selected to receive the €10.000 grant to finance the execution of their implementation plan. Regardless of the selection outcome, **sustainability advisors should continue to support their clients to carry out their EENergy implementation plan.** In the case of funded beneficiaries, this may take the form of continued advisory support during the performance of the activities and continued identification of further energy efficiency improvement opportunities. **Clients that receive the €10.000 grant will be eligible for reporting as an advisory achievement.** In the cases of regular (non-funded) beneficiaries, this support may take the form of identification of alternative sources of financing for the implementation plan, or further sustainability advice in other areas of the client's business.

Step 5: Support in benchmarking and capturing progress over time and across SMEs. Information for the benchmarking reports will be collected with the support of EEN advisors, allowing them to identify the performance of the SMEs they support over time. The first benchmarking report will be produced following the closure of the open call using the data provided at the application stage. A subsequent

⁴ EEN EE Catalogue: https://een.ec.europa.eu/system/files/documents/2023-06/EEN_Catalogue_Energy_Solutions_1_2023.pdf

report (requesting the same, objective and comparable information as is being provided at the application stage) is planned for January 2026. These benchmarking reports will support the sustainability advisor and the respective supported SME to identify where additional support may be needed by providing comparisons to aggregated anonymous information on similar firms in the same sector/region/size. An improvement in key outcomes related to energy efficiency (over time) can be used as supporting, suggestive evidence towards sustainability advisors' contribution to an improvement for the SMEs. **In this sense, a correlation between continued advisory support and energy efficiency improvements according to the benchmark studies may qualify as an advisory achievement for the sustainability advisor under the standard performance measurement rules of EEN (KPI3 – achievements).** The sustainability advisors will be supported, via relevant consortia and the World Bank team, to ensure that all programme beneficiaries participate in these data collection activities. Provision of the data by each SMEs is a pre-requisite to receive the tailored benchmarking report.

To summarise, the EEN sustainability advisor will for all eligible applicants:

- Implement a sustainability assessment on the applying SME to identify the strengths and weaknesses of the SME, that will lead to the definition of a tailor-made EENergy implementation plan.
- Promote the EENergy grant scheme as well as other suitable Energy Efficiency funding opportunities.
- Confirm, via an email link, that an applying SME has been supported by the sustainability advisor to develop a relevant implementation plan.
- Support the SME through the execution of the implementation plan along the project and, if necessary, support the SME to identify alternative and additional sources of funding for the implementation of their energy efficiency activities.
- Link its client SME to third party experts that could support them in the implementation of the different actions defined in their implementation plan.
- Support data collection efforts and discuss benchmark reports following the application stage and further data collection efforts in January 2026.

2.3 Eligibility Criteria

The EENergy open call is open to any legal entity which fulfils the following criteria:

- It is established and operational in one of the countries participating in the EU's single market program which includes:
 - The EU member states⁵.
 - The SMP COSME Strand: **Iceland, Liechtenstein, and Norway**
 - EU Acceding countries, candidate countries, potential candidates, and European Neighbourhood Policy Countries which participate in the SMP: **Bosnia & Herzegovina, Kosovo, Moldova, Montenegro, North Macedonia, Serbia, Türkiye, and Ukraine.**

⁵ Applicants from Hungary are nominally eligible, but should take extra care to ensure they are not excluded for funding on the basis of European Council Implementing Decision 2022/2506

- It is an SME as described by the European Commission Recommendation 2003/361/EC⁶, and the SME user guide,⁷ the main considerations being that the legal entity:
 - Is an enterprise, i.e., engaged in an economic activity,
AND
 - Has a staff headcount of less than 250 full-time equivalents,
AND
 - Has an annual turnover of €50 Million or less,
OR
 - Has a balance sheet total of €43 Million or less,For any non-independent entities (i.e., those with a shareholding in other enterprises, or those that have other enterprises within their own shareholding structure), the above criteria must be assessed according to the methodology set out in the SME user guide.
- It was incorporated before the 01.01.2024.
- It has and provides a valid VAT number or registration number.
- It is engaged with the Enterprise Europe Network and has developed an EENergy Implementation plan together with an EEN Sustainability Advisor that is referenced in the application form.
 - **New EEN clients, i.e., those who have not previously worked with the EEN are also eligible and encouraged.**
- **It has not submitted an eligible application to the 1st EENergy Open Call.**
 - Companies who submitted an application to the 1st EENergy Open Call and passed the eligibility check cannot receive funding in the 2nd Open Call, regardless of the outcome of the selection process in the 1st call. All eligible clients from the 1st call are already part of the ongoing impact evaluation study and can benefit from the regular services from EENergy.
 - Companies who submitted an application to the 1st EENergy Open Call, but did not pass the eligibility check, are eligible for funding in the 2nd call. We encourage clients with ineligible applications from the 1st call to contact the EENergy helpdesk to understand the reason for the non-eligibility decision, so this can be corrected in the upcoming resubmission.
- It is not in financial difficulty, bankrupt, in a liquidation or winding up process, having its affairs administered by courts, or any similar situation according to the Commission Regulation No 651/2014, art. 2.18.
- It is not excluded from the possibility of obtaining EU funding under the provisions of both national and EU law, or by a decision of both national or EU authority.
- It has fully filled-in the application form where applicable.
- It agrees to provide information for follow-up data collections to support the impact assessment study.

For the complete avoidance of doubt, both funded and regular beneficiaries of the 1st EENergy Open Call (any eligible applicant) cannot participate in the 2nd EENergy Open Call. Any applications received from such companies will be disqualified from the selection process.

⁶ European Commission Recommendation 2003/361/EC.

<http://eur-lex.europa.eu/LexUriServ/LexUriServ.do?uri=OJ:L:2003:124:0036:0041:en:PDF>

⁷ SME definition: <https://op.europa.eu/en/publication-detail/-/publication/756d9260-ee54-11ea-991b-01aa75ed71a1>

2.4 Energy Intensive Industries

The 2nd EENergy open call places an increased focus on companies active in Energy Intensive Industries (EII). The definition of EII has been updated to include companies where:

- **The nature of the main economic activity is manufacturing (including processing).**

AND

- **The company is engaged economically active in one of the defined EII industries**

The following industries are considered to be energy intensive:

- Agriculture
- Basic Metals including Ferro-Alloys & Silicon, Non-Ferrous Metals, and Steel
- Ceramics & Refractory Products
- Cement
- Chemicals & Chemical Products
- Coke & Refined Petroleum Products
- Computers, Electronics & Optics
- Concrete, Cement & Plaster
- Construction
- Electrical Equipment
- Fabricated Metal Products
- Fertilizers
- Food & Beverages
- Furniture
- Glass
- Machinery & Equipment
- Motor Vehicles & Other Transport Equipment
- Other Non-Metallic Minerals
- Pharmaceuticals
- Pulp & Paper
- Refining
- Rubber & Plastics
- Textiles & Leather
- Water Collection, Treatment & Supply & Sewage
- Wood

OR

- **At least 40% of the company's total costs (energy, goods, materials, services) are energy costs.**

2.5 Support & Help

A list of Frequently Asked Questions (FAQ) is available on the grant platform website at <https://eenergy.grantplatform.com/>. Should advisors have any questions or queries related to the advisory process, the application process, the eligibility check, the selection process, or other details related to the open call, they are requested to first review the FAQ list. This list will be continuously updated during the call opening period with any other FAQs.

If the applicant's query is not covered within the FAQ list, a dedicated helpdesk is available for any other questions. Applicants can reach the call helpdesk through the email address: EENergy@lic.lt. A dedicated helpdesk team will monitor all communications to this address and either answer queries directly or connect enquiries with appropriate contact people from the EENergy consortium or the EEN.

3 Selection Process

All applications which are deemed eligible will be subject to a selection process through which the funded beneficiary and regular beneficiary SMEs will be selected. A stratified randomisation will be used for the selection. At least 229 companies will be selected for funding with at least 67 companies being active in energy intensive industries (EII).

Given that the appropriate proportions of EII and non-EII clients apply, then the selection will be performed via a randomised lottery with all applicants being treated equally. Furthermore, the randomisation will aim to ensure statistical similarity between the funded and regular beneficiary groups according to these criteria. In order to fairly distribute the available resources and to facilitate the impact evaluation study, the final eligible group of applicants will be randomly split into funded beneficiary and regular beneficiary groups.

The randomisation will further aim to ensure a consistent success rate on an EEN-organisation level. **However, the exact distribution of the funded beneficiaries is highly dependent on the nature of the applicant pool and no guarantees can be made regarding the success chances on an organisation level.**

4 Administrative & Financial Details

4.1 Conflict of Interest

All EEN advisors must take all measures to prevent any situation where the impartial and objective implementation of the activities is compromised for reasons involving economic interest, political or national affinity, family or emotional ties or any other shared interest ('conflict of interests'). All potential conflicts of interest will be assessed carefully. More information can be found in the EU's

guide to addressing conflicts of interest.⁸ All advisors must formally notify the EENergy consortium without delay of any situation constituting or likely to lead to a conflict of interest and immediately take all the necessary steps to rectify this situation. The EENergy consortium may verify that the measures taken are appropriate and may require additional measures to be taken by a specified deadline.

4.2 Double Funding

Double funding is defined as **the use of two separate public funding sources for the same activity**. It is strictly prohibited. The funds provided by EENergy may be used as a contribution to an overall larger investment, provided that the remaining funds for the investment come from the company's own resources. To illustrate this, we take the following example:

A company wishes to invest in a new piece of equipment for their production line which should reduce the energy consumption of the line by an estimated 7%. The new piece of equipment will cost €30.000 (VAT exclusive) to purchase and install.

Three example scenarios are set forth:

Case 1: The company receives €10.000 from the EENergy Open Call 1 and uses this, along with €20.000 of its own capital, to purchase the new equipment -> **ELIGIBLE**

Case 2: The company receives €10.000 from the EENergy Open Call 1 and uses this, along with a €20.000 from a private bank, to purchase the new equipment -> **ELIGIBLE**

Case 3: The company receives €10.000 from the EENergy Open Call 1. Meanwhile, the company has also received €20.000 grant funding from a public regional/national/other EU program to support energy efficiency increases. The company uses both sets of funds to purchase the new equipment and both funds contribute to the activity defined within the EENergy scope. -> **DOUBLE FUNDING, NON-ELIGIBLE**

Case 4: The company receives €10.000 from the EENergy Open Call 1. Meanwhile, the company is carrying out an R&D or innovation project funded by a public grant programme which foresees the procurement of this new piece of equipment. The company uses the €10.000 from EENergy together with funding from the regional/ national/ EU project to purchase the same new equipment and both funds contribute to the activity defined within the EENergy scope. -> **DOUBLE FUNDING, NON-ELIGIBLE**

In cases 1 & 2, should a funded beneficiary not be able to provide the remaining funds originally planned, and hence not carry out the planned investment within the planned timeframe, the funds will be considered either unused or improperly used and hence subject to return to the EENergy consortium. In case of any doubts regarding possible double funding, applicants are encouraged to seek clarification with the EENergy help desk.

Nota Bene: Consecutive funding applications, e.g., tax return measures for R&D investments, are ineligible on direct grants received under EENergy.

⁸ https://commission.europa.eu/strategy-and-policy/eu-budget/protection-eu-budget/conflict-interest_en

4.3 Non-Eligible Costs

The funds provided by EENergy must be used exclusively for the activities set out in the application, to purchase/pay for equipment/services/courses provided by external third parties. For the avoidance of doubt, a non-exhaustive list of non-eligible costs is provided here:

- Any internal company costs including:
 - Salaries and wages
 - Internally invoiced goods & services
 - Beneficiary costs associated with the implementation of the activities or the gathering of data for reporting purposes
 - Overhead
 - Taxes on company operations (e.g., corporation tax)
- External Taxes (e.g., VAT)
- Equipment depreciation cannot be included as part of the activity budget
- Travel costs
- Attendance to conferences or trade shows
- Reverse leasing

4.4 Other Legal and Liability Information

For the selected funded beneficiaries, the Agreement will include the set of obligations towards the EENergy consortium, for example: promoting the project and giving visibility to the EU funding; understanding potential controls and audits organised by the EENergy Consortium. The EENergy consortium will carry out audits of funded beneficiaries, selected at random, to ensure proper usage of funds and reporting of data. In case data is found to have been misreported, or the provided funds have been used improperly, the expenditures will be deemed ineligible, and any provided funds must be returned. In order to carry out these audits, the funded beneficiary shall ensure that the EENergy consortium and any external body(ies) authorised by it have on-the-spot access at all reasonable times, notably to the funded beneficiary offices, to its computer data, energy data, to its accounting data and to all the information needed to carry out those audits. They shall ensure that the information is readily available on the spot at the moment of the audit and, if so requested, that data be handed over in an appropriate form. On the basis of the conclusions of the audit, the EENergy consortium can take all appropriate measures which it considers necessary, including the issuing of recovery orders regarding all or part of the payments made by EENergy to the company in question and the application of any applicable sanction to do so.

The EENergy consortium cannot be held liable for any acts or omission of the applicant in relation to the selected activity implemented by the funded beneficiary. The EENergy consortium shall not be liable for any defaults of any expenditures associated with the activity, including, for instance, anomalies in the functioning or performance thereof. Funded beneficiaries shall bear sole responsibility for ensuring that their acts within the framework of their activities do not infringe third parties' rights.

The EENergy Consortium might cancel the call at any time, change its provisions or extend it. In such a case we will inform all applicants about the change.

Any matters not covered by this Guide will be governed by Danish law and rules related to the Single Market Programme and EU grants.

5 Checklist

All advisors accompanying applying SMEs are strongly encouraged to read the following points and ensure all points are properly addressed ahead of application submission.

- ✓ **Did your client submit an eligible application to the 1st EENergy Open Call?** If your client submitted an application to the 1st call and passed the eligibility check, they are unfortunately not eligible for the 2nd call and your application will not be considered for selection. In this case, please ensure they do not submit an application for the 2nd call.
- ✓ **Have you formulated an EENergy implementation plan for your client?** The existence of an EEN-formulated implementation plan is a pre-requisite for the submission of an application. Applicants without an EEN-approved implementation plan will not be considered for selection.
- ✓ **Do the planned activities fall entirely within the three eligible cost categories?** All EENergy actions must fall within the categories described in section 2.1.1.
- ✓ **Is there a clear reasoning to achieve the 5% or greater energy reduction target?** Applications must present a clear rationale for how the planned activities can achieve the energy reduction of 5% or more, either based on direct quantitative data (in the case of an investment action), or through appropriate targeting of measures (in the case of stand-alone consultancy and/or training actions).
- ✓ **Have you followed the logic chart to ensure that your implementation plan is eligible?** The flow chart presented in Figure 2 provides a logical decision tree to ensure that all required aspects of the plan are present so that it can be considered eligible. Please follow the chart to ensure everything has been addressed.
- ✓ **Is your client's application complete?** Have they completed every section of the proposal and provided all the information requested? Applications which are missing any of this information (incl. the request for information to be uploaded) will be deemed ineligible.
- ✓ **Has your client submitted their application through the official grant management platform?** Only applications received through the official platform will be considered for selection. Applications received by other means will be deemed ineligible.
- ✓ **Has your client submitted their application before the deadline?** The grant management platform will close at the time and date of the call deadline. Any applications received after the deadline will be deemed ineligible.
- ✓ **Have you approved your clients' application?** It is the responsibility of the sustainability advisor to approve the client's application for it to be considered in the evaluation procedure. Please make sure that you are aware of this obligation, and that you approve the application before the deadline, to avoid disappointment.